

Interfacing ACT-R to Complex Worlds

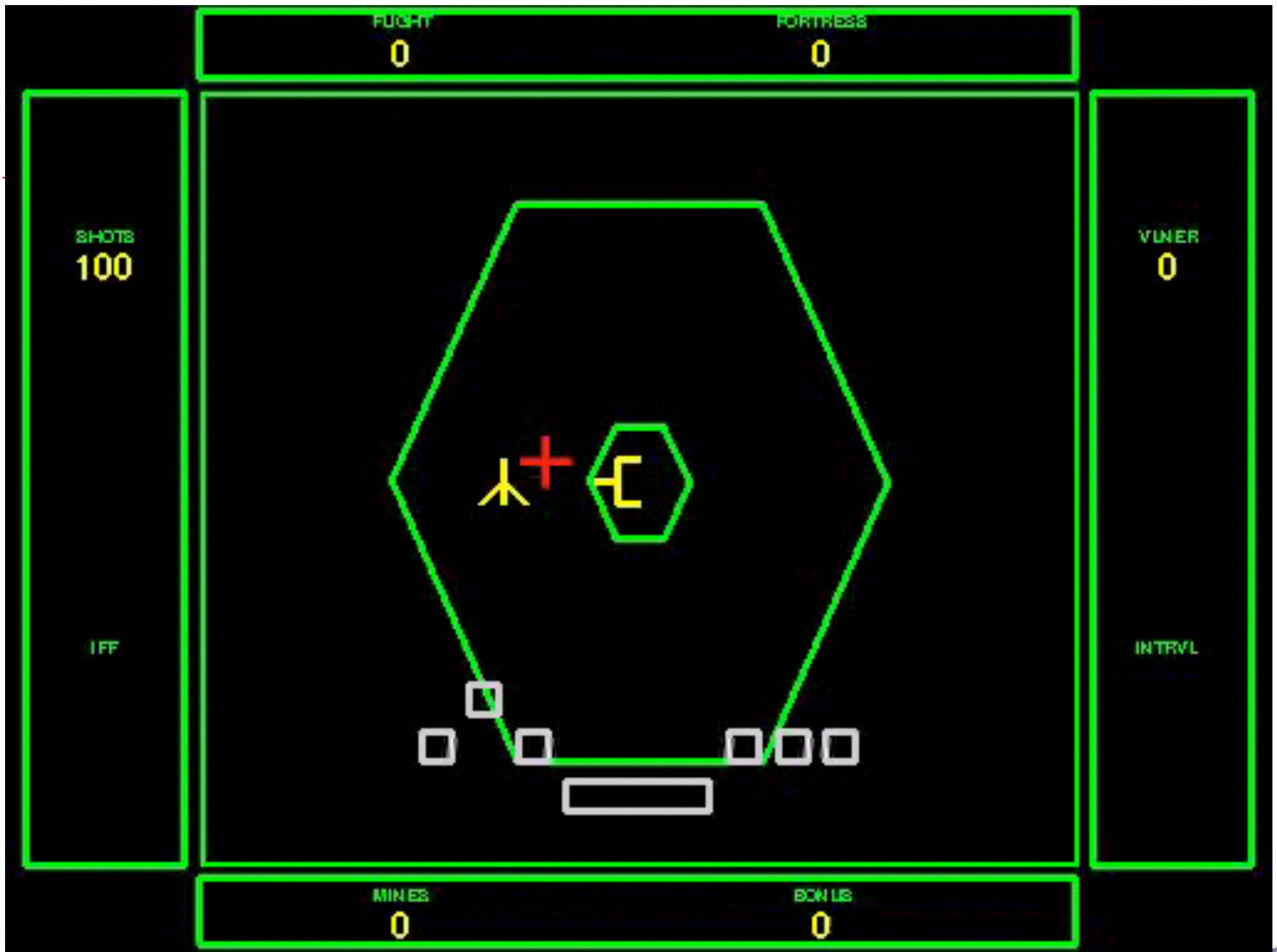
Michael J. Schoelles
ACT-R PGSS 2011
July 19, 2011

Interfacing ACT-R with External Worlds

- Complex and Dynamic Environments
 - Space Fortress - Ryan Hope and Marc Destefano
 - X-Plane
 - Second Life - Dan Veksler
- Remote Device

Movie





Space Fortress - Ryan Hope, Mark Destefano

- Fast paced gamed
- 30 frames per second
- Converting from DBus (binary, OS function) to TCP/IP





KDFW: Dallas Fort Worth Intl

1

2

X-Plane Model-Uses all the modules

- Threaded Cognition - steering, speed monitoring, AC detection, etc
- Temporal - when to recheck
- Visual - cockpit + airport
- Auditory - Ground Controller
- Vocal - repeat Ground Controller instructions
- Manual - joystick + instruments
- Imaginal - speed limits
- Retrieval - remember route

Visicon

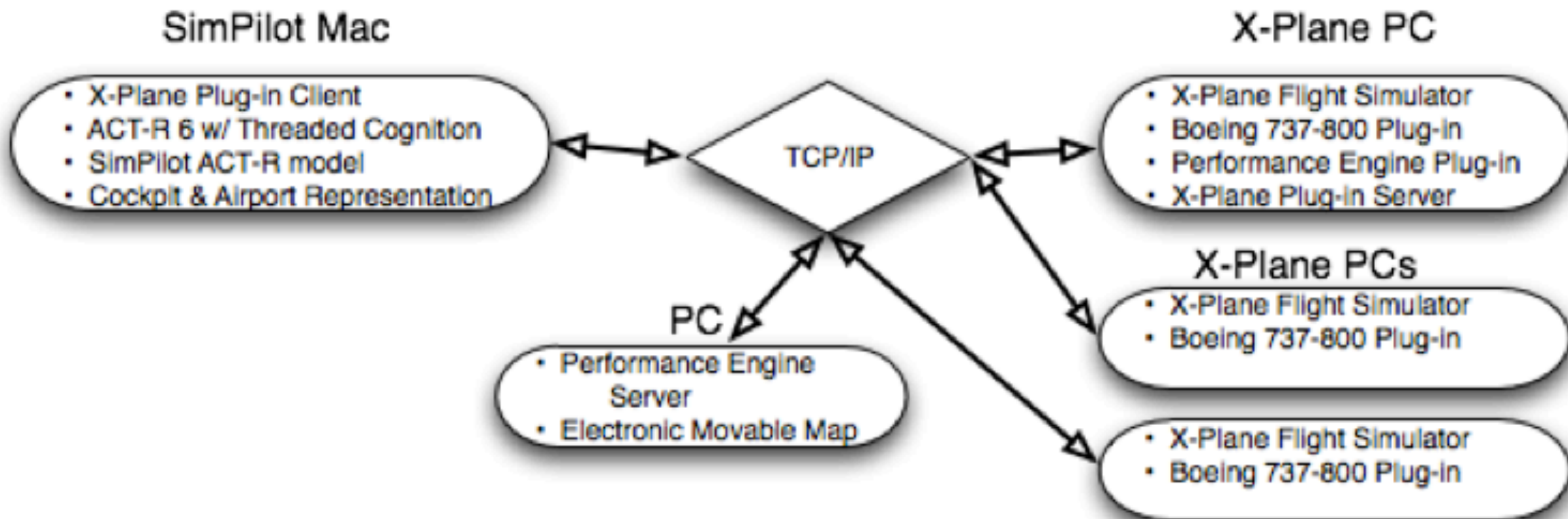
What the model sees

(349 298)	NEW	SWITCH-8-POS	?	DC-SWITCH	INSTRUMENT-LOCATION19
(391 467)	NEW	BTN/LIGHT	1	WXR	INSTRUMENT-LOCATION38
(392 426)	NEW	COVER	NIL	STANDBY-POWER	INSTRUMENT-LOCATION17
(412 468)	NEW	BTN/LIGHT	1	TCAC	INSTRUMENT-LOCATION37
(412 614)	NEW	HEADING-GUAGE	?	HEADING-DIFF	INSTRUMENT-LOCATION74
(413 578)	NEW	DISPLAY	106	HEADING-MAG	INSTRUMENT-LOCATION73
(413 669)	NEW	DISPLAY	NIL	EFIS-MAP	INSTRUMENT-LOCATION75
(429 297)	NEW	SWITCH-8-POS	?	AC-SWITCH	INSTRUMENT-LOCATION18
(432 467)	NEW	BTN/LIGHT	1	ARPT	INSTRUMENT-LOCATION36
(440 462)	NEW	BTN-PANEL	NIL	EFIS-MAP-OPTIONS	INSTRUMENT-LOCATION71
(451 466)	NEW	BTN/LIGHT	1	WPT	INSTRUMENT-LOCATION35
(456 436)	NEW	DIAL	?	EFIS-MAP-ZOOM	INSTRUMENT-LOCATION69
(461 115)	NEW	DISPLAY	NIL	MENU-DISPLAY	INSTRUMENT-LOCATION22
(471 467)	NEW	BTN/LIGHT	1	VOR	INSTRUMENT-LOCATION34
(473 123)	NEW	MENU-ITEM	0	OVERHEAD-MENU-ENTRY	INSTRUMENT-LOCATION8
(491 466)	NEW	BTN/LIGHT	1	NDB	INSTRUMENT-LOCATION33
(493 107)	NEW	DISPLAY	NIL	OVERHEAD-OFF	INSTRUMENT-LOCATION21
(542 404)	NEW	DISPLAY	?	AP-COURSE	INSTRUMENT-LOCATION6
(560 459)	NEW	TOGGLE-SWITCH	OFF	AP-F/DL	INSTRUMENT-LOCATION2
(583 164)	NEW	TOGGLE-SWITCH	0	WINDOW-HEAT-1	INSTRUMENT-LOCATION16
(596 420)	NEW	TOGGLE-SWITCH	OFF	AP-A/T-ARM	INSTRUMENT-LOCATION0
(616 165)	NEW	TOGGLE-SWITCH	0	WINDOW-HEAT-2	INSTRUMENT-LOCATION15
(632 207)	NEW	TOGGLE-SWITCH	0	PILOT-HEAT	INSTRUMENT-LOCATION12
(657 406)	NEW	DISPLAY	?	AP-IAS/MACH	INSTRUMENT-LOCATION5
(662 118)	NEW	TOGGLE-SWITCH	OFF	LANDING-LIGHTSL	INSTRUMENT-LOCATION55
(666 208)	NEW	TOGGLE-SWITCH	0	PILOT-HEAT-R	INSTRUMENT-LOCATION11
(681 166)	NEW	TOGGLE-SWITCH	0	WINDOW-HEAT-3	INSTRUMENT-LOCATION14
(690 118)	NEW	TOGGLE-SWITCH	OFF	LANDING-LIGHTSR	INSTRUMENT-LOCATION48
(712 165)	NEW	TOGGLE-SWITCH	0	WINDOW-HEAT-4	INSTRUMENT-LOCATION13
(714 118)	NEW	TOGGLE-SWITCH	OFF	TAXI-LIGHTSL	INSTRUMENT-LOCATION52
(734 1096)	NEW	WHEEL	0	ELV-TRIM-DN-1	INSTRUMENT-LOCATION43
(734 1096)	NEW	WHEEL	0	ELV-TRIM-UP-1	INSTRUMENT-LOCATION44
(739 118)	NEW	TOGGLE-SWITCH	OFF	TAXI-LIGHTSR	INSTRUMENT-LOCATION51
(758 403)	NEW	DISPLAY	75	AP-HEADING	INSTRUMENT-LOCATION7
(765 118)	NEW	TOGGLE-SWITCH	0	NAV-LIGHT	INSTRUMENT-LOCATION53
(771 597)	NEW	DISPLAY	0.0	ENGINE1U-N1	INSTRUMENT-LOCATION31
(775 1168)	NEW	LEVER/LIGHT	1	PARKING-BRAKE	INSTRUMENT-LOCATION54
(790 118)	NEW	TOGGLE-SWITCH	OFF	STRB	INSTRUMENT-LOCATION68
(801 880)	NEW	DISPLAY	0	ENGINE1L-N1	INSTRUMENT-LOCATION24
(812 118)	NEW	TOGGLE-SWITCH	OFF	BEACON	INSTRUMENT-LOCATION67
(812 1073)	NEW	LEVER	?	THROTTLE	INSTRUMENT-LOCATION40
(822 1163)	NEW	LEVER	0	MIXTURE-1	INSTRUMENT-LOCATION47

Modeling the Task Environment

- 75 instruments
- Lots of updating between ACT-R and X-Plane
- Airport markers add/deleted dynamically
- One of the most extensive, detailed, and formal descriptions of the Task Environment

System Configuration



Listener

SET-BUFFER-CHUNK VISUAL-LOCATION VISUAL-
 PRODUCTION-FIRED DO-ALL-SEE
 SET-BUFFER-CHUNK VISUAL BTN498
 PRODUCTION-FIRED COMPARE-BTN-ATTEND
 PRODUCTION-FIRED COMPARE-BTN-CHECKIFNOTG
 PRODUCTION-FIRED COMPARE-RETRIEVE
 SET-BUFFER-CHUNK RETRIEVAL ____victorian+
 PRODUCTION-FIRED COMPARE-SETBEST

th+particle+light chosen

PRODUCTION-FIRED COMPARE-BTN-LOOK4UNATTE
 SET-BUFFER-CHUNK VISUAL-LOCATION VISUAL-
 PRODUCTION-FIRED DO-ALL-SEE
 SET-BUFFER-CHUNK VISUAL BTN496
 PRODUCTION-FIRED COMPARE-BTN-ATTEND
 PRODUCTION-FIRED COMPARE-BTN-CHECKIFNOTG
 PRODUCTION-FIRED COMPARE-RETRIEVE
 SET-BUFFER-CHUNK RETRIEVAL ____Object
 PRODUCTION-FIRED COMPARE-SETBEST

PRODUCTION-FIRED COMPARE-BTN-LOOK4UNATTE
 PRODUCTION-FIRED COMPARE-BTN-DONE
 PRODUCTION-FIRED DO-BTN-LOOK
 SET-BUFFER-CHUNK VISUAL-LOCATION VISUAL-
 PRODUCTION-FIRED DO-ALL-SEE
 SET-BUFFER-CHUNK VISUAL BTN496
 PRODUCTION-FIRED DO-BTN-ATTEND
 MOVE-CURSOR OBJECT NIL LOC VISUAL-LOCATI

PRODUCTION-FIRED DO-BTN-CLICK
 CLICK-MOUSE
 PRODUCTION-FIRED DO-BTN-CLICKEDBEST
 PRODUCTION-FIRED COMPARE-BTN-LOOK4UNATTE
 PRODUCTION-FIRED COMPARE-BTN-LOOK4UNATTE
 PRODUCTION-FIRED COMPARE-BTN-LOOK4UNATTE

-9bcc-e71041ff5748")

3947

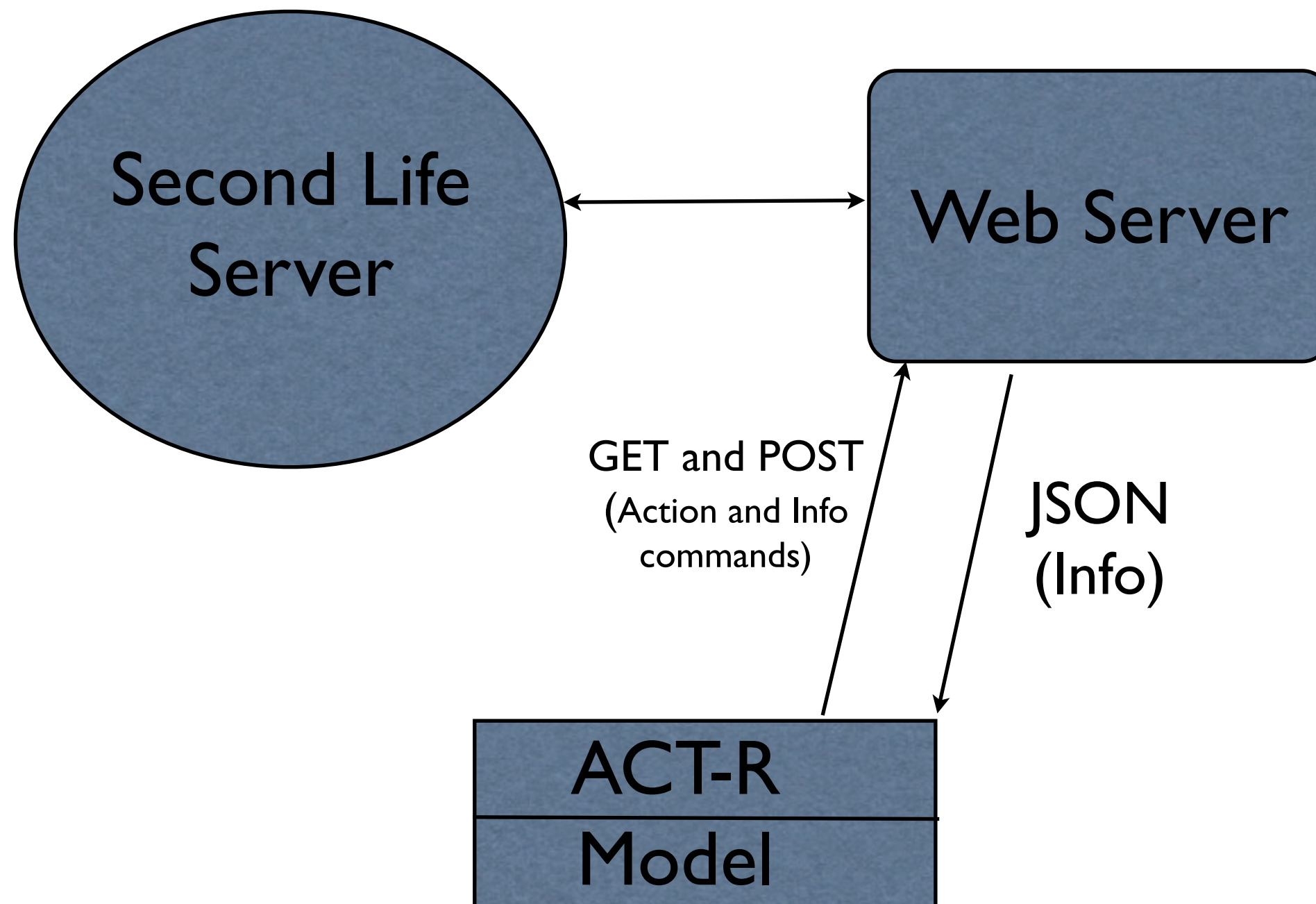
3964

SET-BUFFER-CHUNK VISUAL-LOCATION VISUAL-
 PRODUCTION-FIRED COMPARE-BTN-LOOK4UNATTE

Script agent



Second Life - Dan Veksler



Remote Device

- Task should be separate from the model
 - TCP/IP
 - Separate or same computer
 - Fast enough to date
 - Buttner (ICCM 2010)
 - Use existing GUI environment TCP/IP??
 - JavaScript Object Notation (JSON)
 - Data Interchange Format

The image features four interlocking brass gears of varying sizes against a solid blue background. The gears are arranged in a cluster, with the largest gear at the top left and the smallest at the bottom right. The lighting creates highlights and shadows on the teeth and surfaces of the gears, emphasizing their metallic texture. The text "Thank You!" is centered in the upper half of the image, overlaid on the gears.

Thank You!